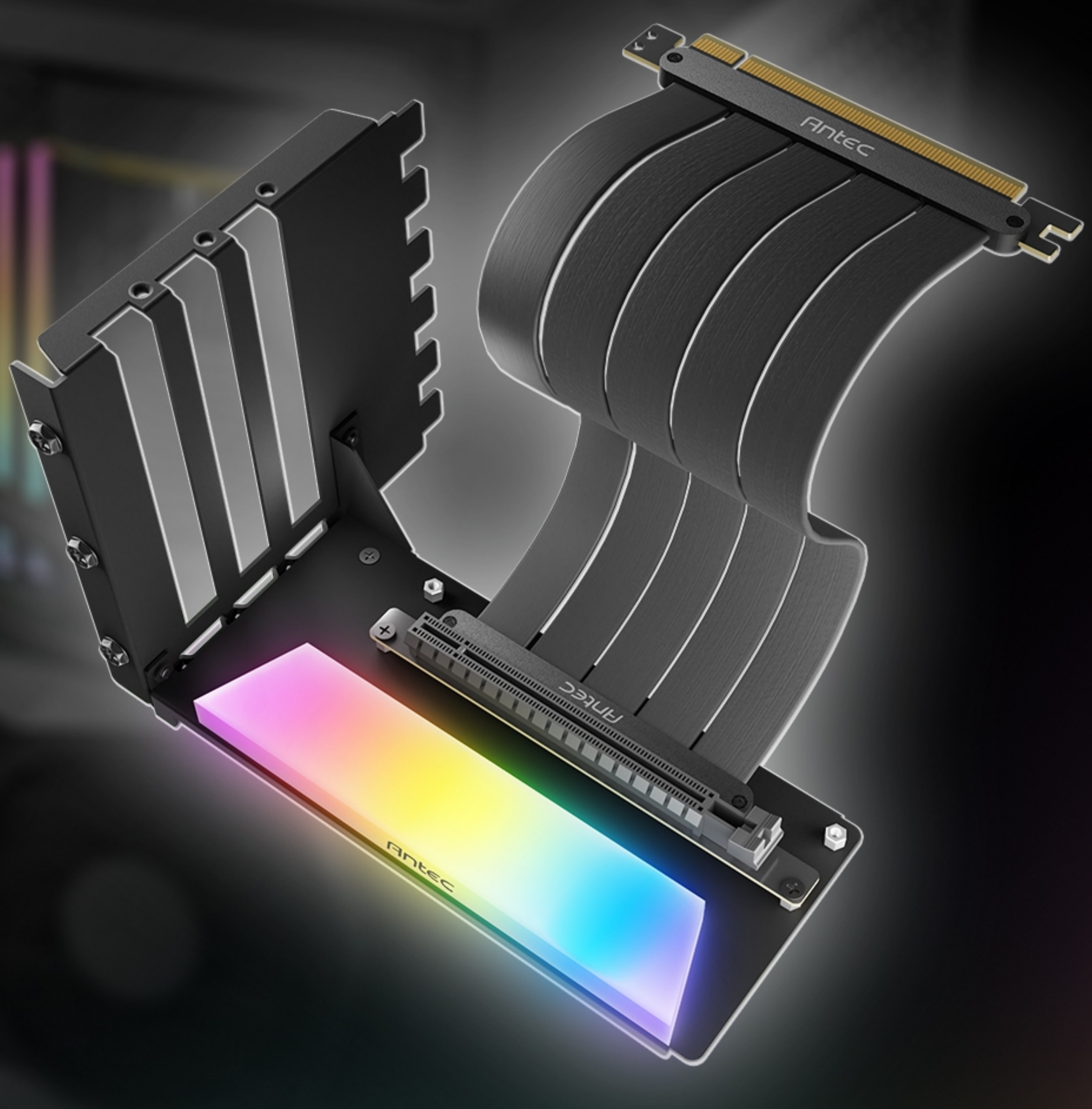


Antec

ANTEC PCI-E 4.0 RISER CABLE WITH ARGB BRACKET

Showcase your GPU by using Antec Gen4 riser cable.

Compatible Cases: ATX & E-ATX Chassis with At Least 7 Full-Profile Expansion Slots
Compatible GPU: Up to Nvidia GeForce RTX 4070

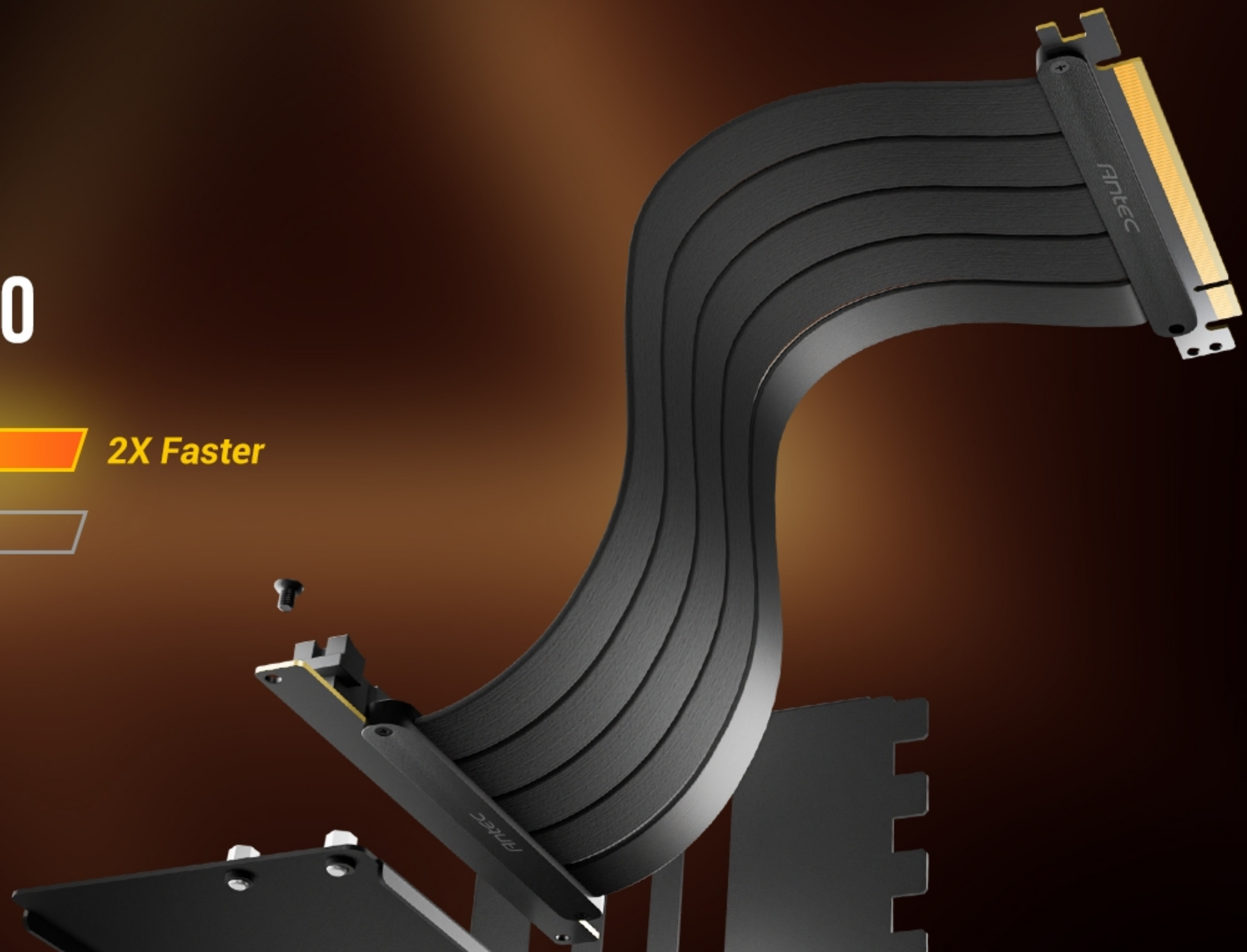


90° GRAPHICS CARD MOUNT

SUPPORT PCIE 4.0

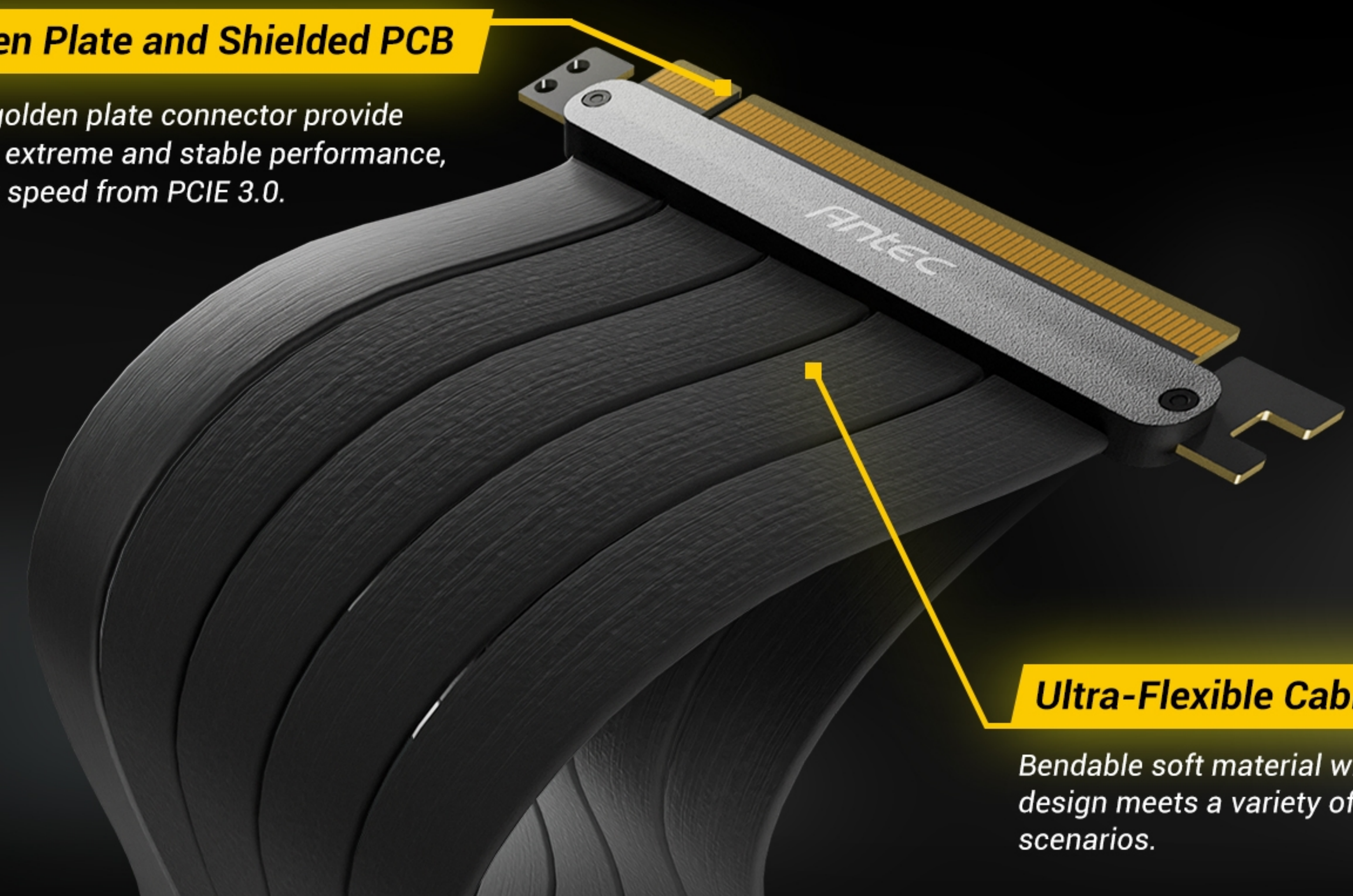
PCI-E 4.0 2X Faster

PCI-E 3.0



High Quality Golden Plate and Shielded PCB

High shielding PCB and golden plate connector provide FPS lossless output with extreme and stable performance, letting you experience 2x speed from PCIe 3.0.



Ultra-Flexible Cable Sleeves

Bendable soft material with sectional design meets a variety of installation scenarios.

COMPATIBLE WITH MOST GRAPHICS CARDS

NVIDIA GEFORCE RTX 4070 / 4060 T1 / 4060
NVIDIA GEFORCE RTX 30 SERIES
AMD RADEON™ RX 6000 SERIES

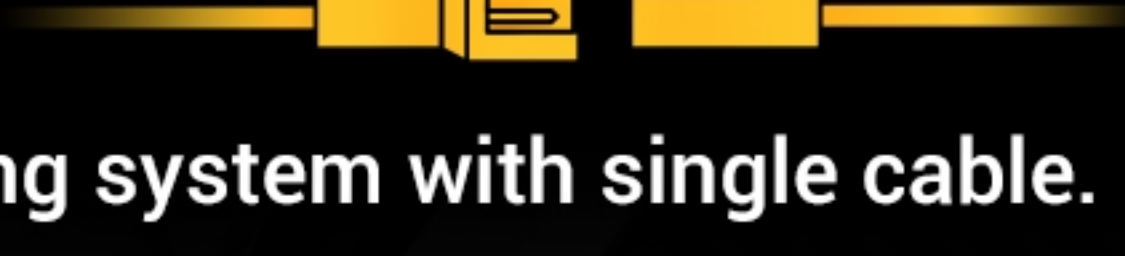


3-PIN 5V ARGB SYNC



Support ARGB lighting sync through the motherboard or controller.

DAISY CHAIN



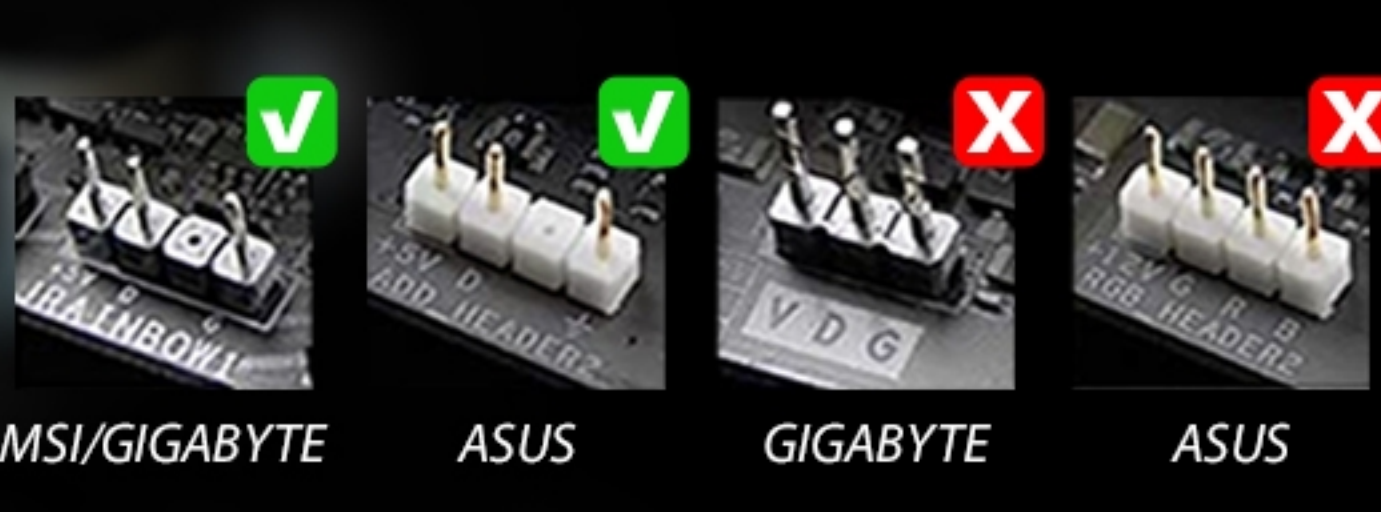
Connect your lighting system with single cable.



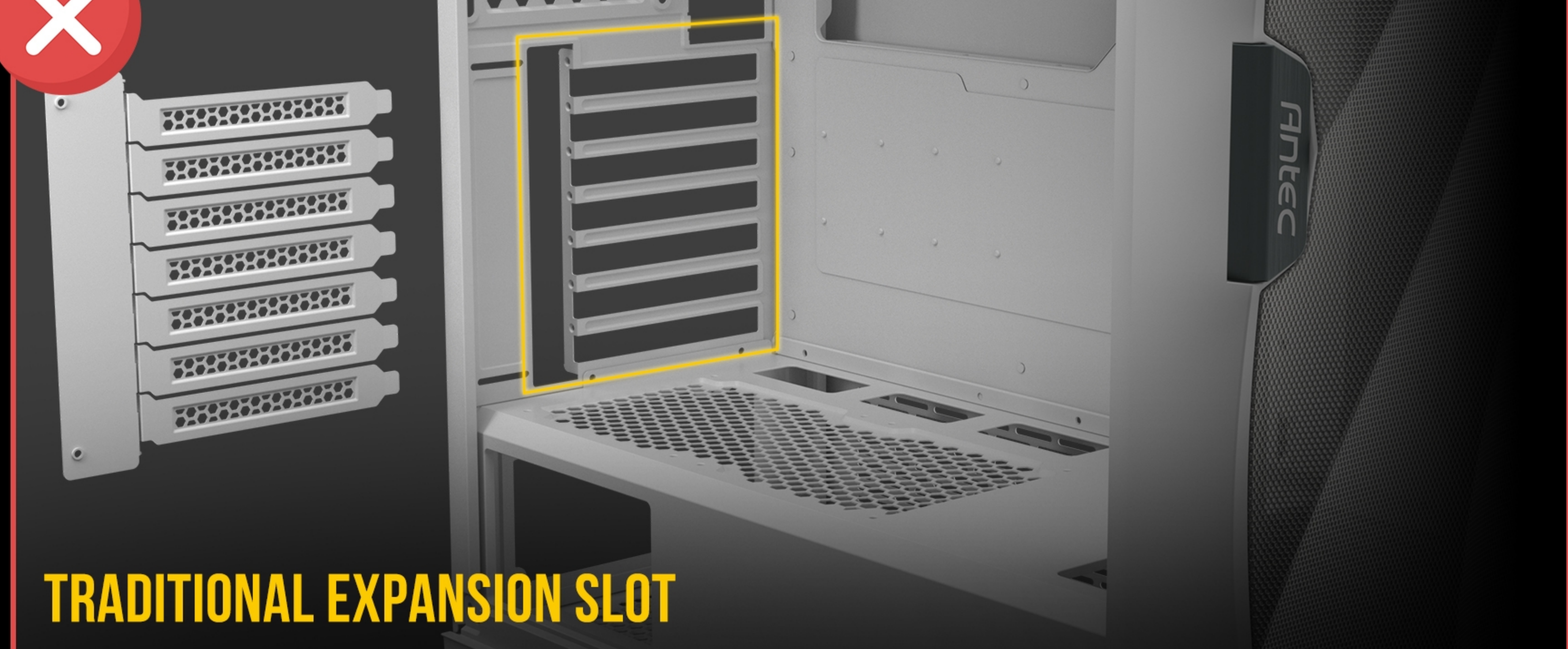
3-Pin ARGB Connector



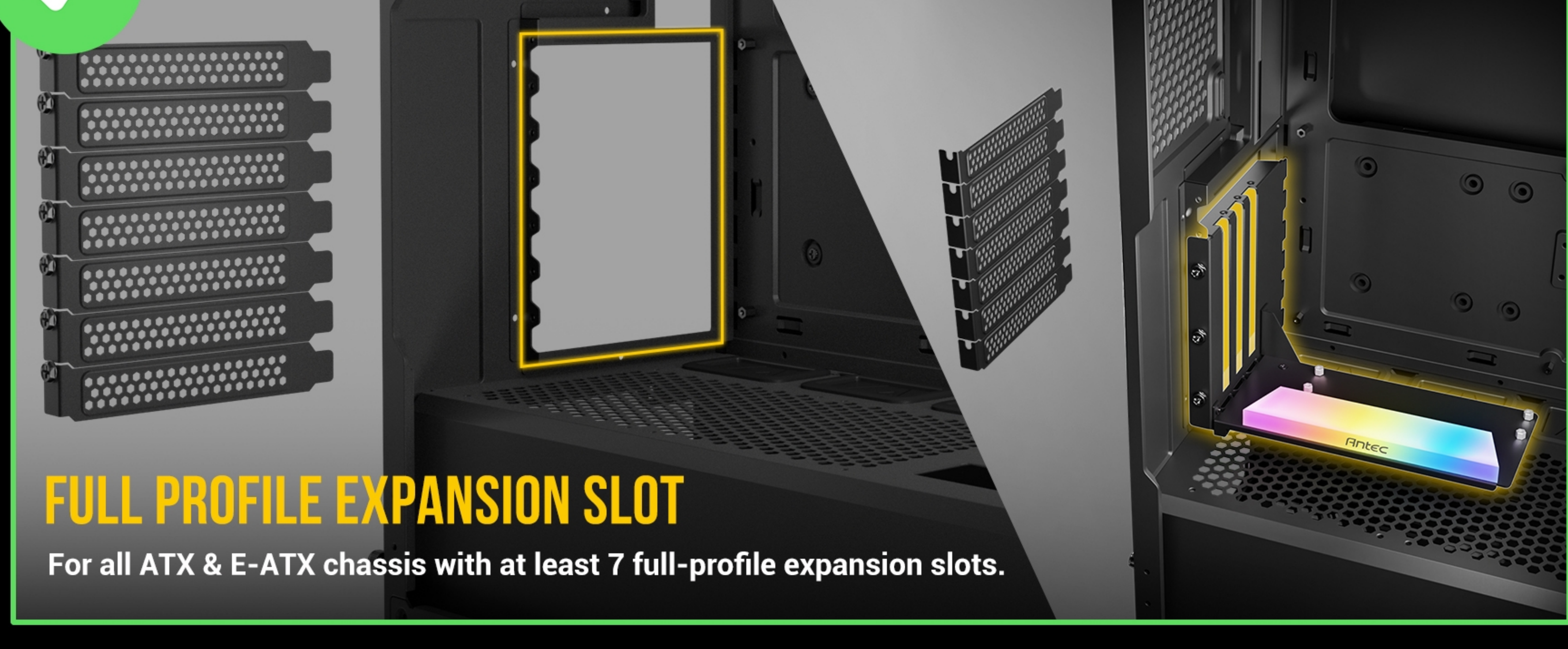
3-Pin ARGB Header



MSI/GIGABYTE ASUS GIGABYTE ASUS



TRADITIONAL EXPANSION SLOT



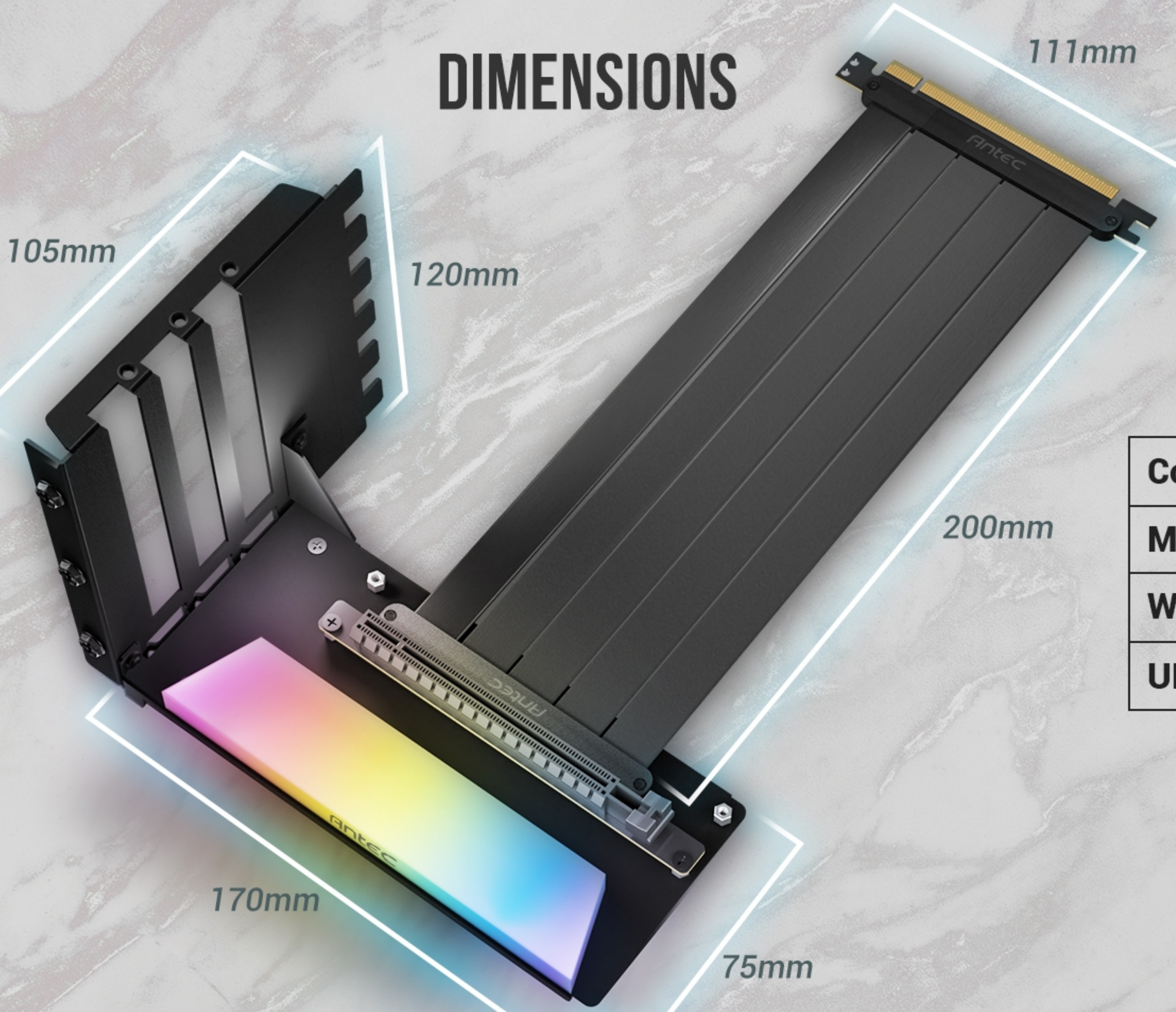
FULL PROFILE EXPANSION SLOT

For all ATX & E-ATX chassis with at least 7 full-profile expansion slots.

PACKAGE CONTENTS

- PCI-E 4.0 Riser Cable (200mm) X1
- VGA Vertical ARGB Bracket X1
- Screw Bag X1

DIMENSIONS



Color	Black
Model Name	AT-RCVB-BK200-ARGB-PCIE4
Warranty	1 year
UPC#	0-761345-77793-3

Antec